

SATINWOOD

CHAPEL HILL

A serene space, at your pace.



Perfectly positioned for lifestyle and convenience.



12km from the CBD

Enjoy the best of both worlds, peaceful suburban living just 12km from Brisbane's vibrant city centre.



Recreation

Close to Mt. Coot-Tha trails, local parks and walking tracks, ideal for weekend adventures and outdoor escapes.



Transport

Convenient access to major roads and public transport options, connecting you easily to the CBD and beyond.



Shopping

Only minutes from Kenmore Village and Indooroopilly Shopping Centre, with boutique retailers, cafés, and essentials nearby.



Education

A short distance from Chapel Hill State School, leading private schools, and The University of Queensland.



Lifestyle

Leafy surrounds, generous block sizes, and a tranquil cul-de-sac setting offer a relaxed, high-quality lifestyle.

22 Brymer Street,
Chapel Hill, Queensland

URBEX
Designed for life

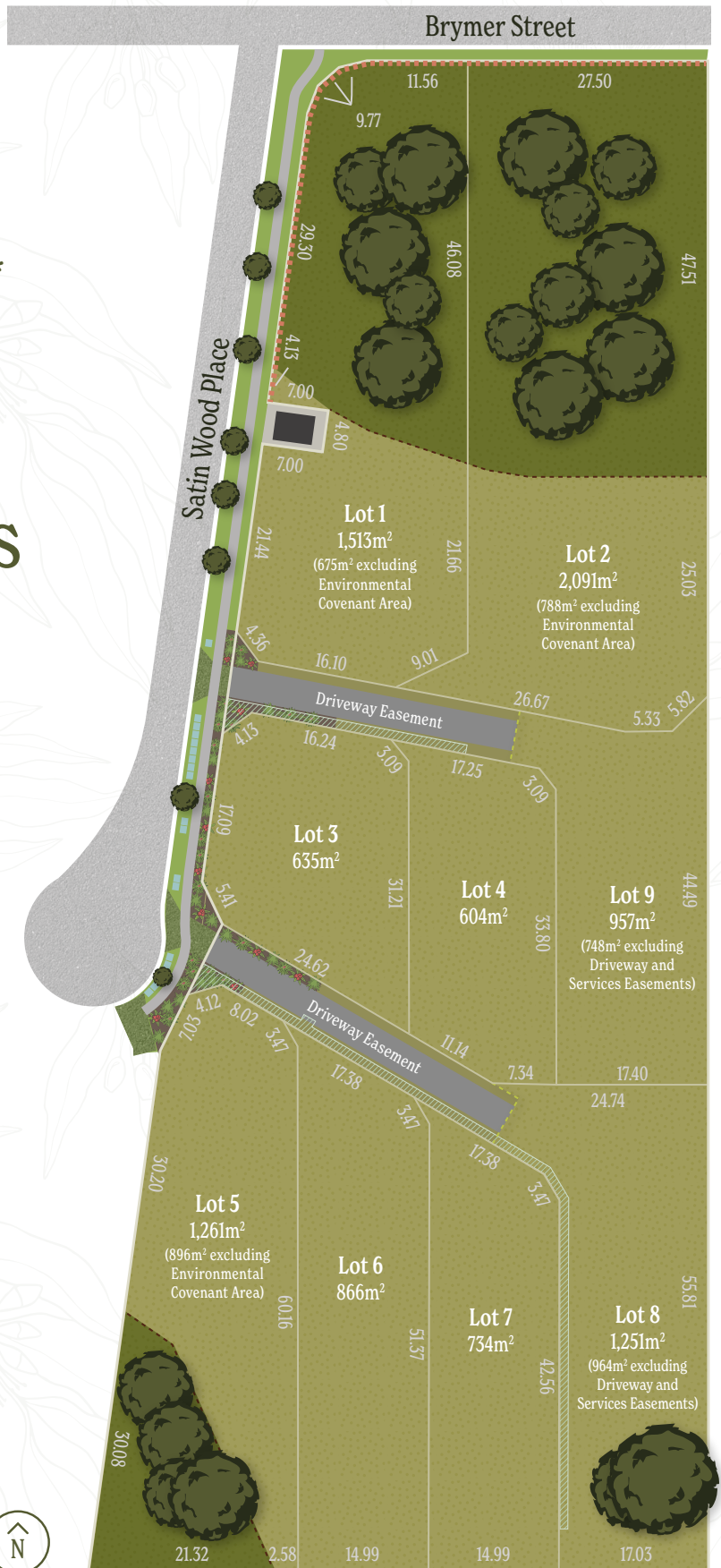
Satinwood Land Release*

Only 9 Premium Large Homesites

This rare opportunity presents a blank canvas to create your dream home in one of Brisbane's most prestigious and tightly held catchments.

Legend

-  Lot sizes from 604m² to 2,091m²
-  Environmental Covenant Area
-  Fauna Friendly Fence
-  Pet Exclusion Fence
-  Electrical Transformer
-  Services Easement
-  Refuse Bin Placement Pad



* Urbex makes no warranty regarding the accuracy or reliability of any descriptions, imagery or information contained in this brochure. All details, including site boundaries, lot numbers, dimensions and layout, are indicative only and are subject to survey, council approval and applicable planning regulations. The developer reserves the right to amend plans at any time without notice. Registration of interest does not guarantee allocation or sale of land. For further information, please contact the sales team.